

Celebrating 110 Years

SOUTHWESTERN LAW SCHOOL

L O S A N G E L E S

LAW SCHOOL THAT FITS YOU




WHY SOUTHWESTERN?

**ACCELERATED 2-YEAR
J.D. PROGRAM** 2

**FULL-TIME DAY 3-YEAR
J.D. PROGRAM** 4

**PART-TIME 4-YEAR
J.D. PROGRAMS** 6

CONCENTRATIONS 8



*Southwestern Law School does not discriminate based on race, color, national origin, sex, sexual orientation, gender (including identity and expression), disability, age, or any other basis prohibited by applicable law in its programs and activities. Please direct all inquiries regarding Southwestern's non-discrimination policies to: Diversity Affairs
3050 Wilshire Boulevard Los Angeles, CA 90010 (213) 738-6872*





Southwestern offers the longest-running **Accelerated 2-Year J.D. Program** in the country. The SCALE® program offers:

- Small class sizes
- Flexible curriculum
- Guaranteed externships

FAQs

When does the first year of SCALE start?

- June with applications typically opening in September

Is there an interview process?

- Yes, an interview is required

How many hours of class are there in a day?

- 4 to 4.5 hours

Is SCALE a semester or quarter system?

- Not officially the quarter system, but there are eight total periods

What is the duration of each period?

- Each period lasts 10-12 weeks



SCALE gave me the confidence and support network necessary to pass the bar and truly feel lawyer-ready."

- Lauren Curry
2L Accelerated 2-Year Program



DO WHAT
YOU LOVE,
SOONER.

ACCELERATED 2-YEAR J.D. PROGRAM

“Through the many Southwestern clinics and externships, I’ve gained hands-on experience at becoming the ideal lawyer.”

- Aaron Cohen
3L Full-Time Day



Full-Time Day 3-Year J.D. Program

After completing the required curriculum, upper-division students may combine their courses with electives and experiential programs to focus on a practice area, pursue a field about which they are passionate, or even explore disciplines they had not yet considered. Examples include:

- Entertainment Law and Business
- Public Interest (Immigration, Children’s Rights, Domestic Violence)
- Criminal Law
- International, Commercial, or Corporate Law
- Family Law
- Technology Law and Entrepreneurship



FULL-TIME DAY 3-YEAR J.D. PROGRAM

“

I am pursuing my dream and setting an example for my daughter.”

- Erica Jansson
3L Part-Time Evening



Part-Time 4-Year J.D. Programs

Southwestern has a 4-Year program that fits you:

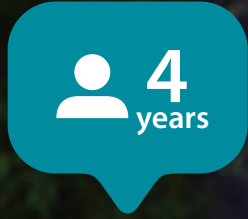
- Part-Time Evening
- Part-Time Day
- **PLEAS** (Part-time Legal Education Alternative at Southwestern)

Southwestern's Evening Program disrupts the traditional model:

- Commute to campus only two evenings per week
- Attend the remaining class hours online
- Take additional courses during the academic year, summer, and/or intercession terms

This is our most flexible part-time format ever!

PLEAS is one of only a few part-time J.D. programs designed to accommodate students with child- or elder-care responsibilities.



PART-TIME 4-YEAR J.D. PROGRAMS

Civil Litigation & Advocacy

The program's goals include providing top litigation training to students, creating a crossroads for judicial bench and bar, and strengthening the foundations of the American civil justice system. The concentration advances the Parish Civil Justice Program goals and provides J.D. students with opportunities to explore more deeply this discipline and distinguish themselves.

Criminal Law & Advocacy

Southwestern offers numerous specialized courses and seminars related to criminal law. Additionally, Southwestern has offered externship placements at the California Court of Appeal, California Superior Court, Federal Public Defender, Los Angeles County District Attorney, and U.S. Department of Homeland Security. Southwestern's award-winning Trial Advocacy Honors Program and Moot Court Honors Program also provide useful skills for students interested in criminal law and advocacy.

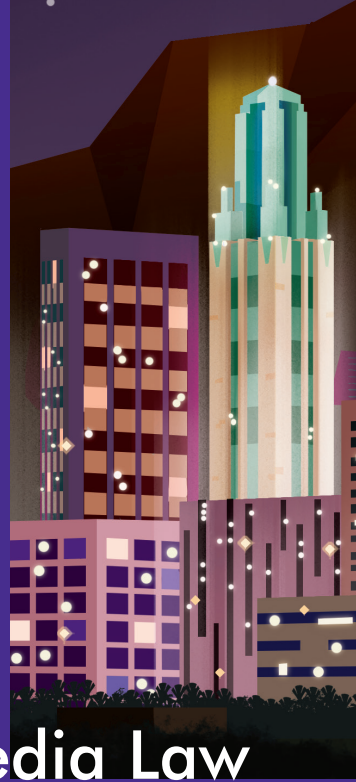
Entertainment & Media Law

Southwestern established the **Donald E. Biederman Entertainment and Media Law Institute** in 2000 to expand upon Southwestern's long history of involvement with the entertainment and media industries. Southwestern offers a rich spectrum of media and entertainment law courses and experiential learning opportunities under the direction of faculty who have tremendous practical experience in the field.

Labor and Employment Law

The Concentration in Labor and Employment Law includes over a dozen distinctive practice areas: collective bargaining and labor relations; employment discrimination in all its forms; disability accommodation; family and medical leave; fair and international labor standards; pensions and benefits; occupational health and safety; public vs. private sector employment; workers' compensation; whistleblower protection; and wrongful termination. Southwestern boasts a comprehensive program of courses, externship placements, co-curricular opportunities, and professional contacts in Labor and Employment Law. Southwestern alumni have long excelled in practice areas falling under this umbrella. 1,000+ alumni identify themselves as having a substantial practice in the law of the workplace.

www.swlaw.edu/concentrations





Public Interest Law

Since its founding, Southwestern has held public interest as a central component of its curriculum and philosophy. Southwestern encourages public service through a rich selection of programs, courses, activities, and individual pursuits. Located in the “public interest corridor” in Los Angeles, Southwestern provides students with numerous opportunities to serve the community. Students participating in public interest work during law school is not only a rewarding way to make a difference in the community but also an opportunity to cultivate lawyering skills of value in any practice area.

Technology Law & Entrepreneurship

The program prepares students for the 21st Century workforce by allowing them to participate in a structured series of advanced courses including intellectual property, technology law, commercial transactions, corporate structuring, entrepreneurship, and regulatory, administrative, and international law . . . all leading to a Concentration reflecting their acquired expertise.



SOUTHWESTERN LAW SCHOOL

Los Angeles, California ■ www.swlaw.edu

