

SOUTHWESTERN LAW SCHOOL

SCALE[®] TWO-YEAR J.D. PROGRAM

In addition to the three traditional courses of study, Southwestern established the first two-year J.D. program in the country. Known as SCALE, the program features an accelerated curriculum that challenges students to master analytical reasoning and legal writing skills while remaining sensitive to ethical obligations and client needs. A trailblazer since 1974, SCALE integrates substantive knowledge and professional skills instruction, a model that is just now being incorporated into curricular reforms at many other law schools in response to the call for more practical skills training in legal education.



SCALE incorporates legal theory and practical skills training in a structured yet flexible 2-year curriculum.

SCALE PROGRAM STRUCTURE

The SCALE academic calendar typically begins in the second week of June. Between the first and second-year, students participate in a mandatory ten week Summer Session. Following a ten day break, students return in early August to begin their second year of SCALE. The SCALE students graduate with their Traditional counterparts in May. The program is divided into eight "periods" along with the mandatory Summer Session. The first four periods constitute SCALE I and the remaining four periods constitute SCALE II.

SCALE I CURRICULUM

The first year of SCALE provides students with a solid grounding in the substantive coverage typically found in first- and some second-year traditional courses, exposure to the interrelationship among legal concepts, and instruction in the development of legal writing and beginning lawyering skills. The SCALE I curriculum utilizes a variety of skills exercises in multiple courses both to teach lawyering skills and to reinforce substantive content. For example, in Evidence Law and Practice, students participate in small groups and apply recently learned rules of evidence. Through these exercises, SCALE students become more familiar with each other as they work together, have the benefit of feedback from numerous faculty members, and gain a deeper understanding of concepts as they develop comfort and experience in oral advocacy. SCALE I students are tested at the end of each period. Frequent testing and feedback on oral and written exercises allow for enhanced learning and academic support intervention when necessary.

SCALE II CURRICULUM

The SCALE II curriculum focuses on more advanced substantive courses and transactions similar to those conducted by attorneys. Through a "hands-on" approach, students build on concepts learned during the first year and are able to acquire and practice additional lawyering skills. SCALE II courses cover skills such as interviewing, counseling and negotiation; preparation of a client opinion letter, evidentiary motions and other legal memoranda; trial preparation and conducting a trial.

Externships also provide an opportunity for students to utilize lawyering skills introduced in the SCALE program as well as a rich opportunity for networking, career exploration, and further professional development. Students have two opportunities to participate in an externship, first during the mandatory Summer Session where students may participate in an externship in government, public interest, judicial or in-house legal departments, and then during Period 8 of SCALE II where students

From the outset, SCALE students develop essential lawyering skills such as oral and written communication, fact-gathering, case planning, counseling, negotiating, litigating and interpersonal relations.

participate in a mandatory externship which may include, in addition to the summer options, a private firm placement. SCALE offers a wide range of externship placements such as the U.S. District Court, the 9th Circuit Court of Appeal, the U.S. Bankruptcy Court, the District Attorney's Office, State and Federal Public Defender's Offices, various public interest venues, private firms and entertainment studios.

SCALE MANDATORY SUMMER SESSION

During the Summer Session, SCALE students choose from three options: (1) participation in an externship; (2) enrollment in one or two summer school electives; or (3) participation in a summer abroad program. In addition, all SCALE students are required to write an independent paper based on one of the topics developed during the SCALE Lecture Series. SCALE students may also work, volunteer or aid a professor as a research assistant during the Summer Session.

SCALE CURRICULUM

SCALE I	
Period 1 – 12 weeks	
COURSE	UNITS
Introduction to Lawyering	
LAWS I	3
Criminal Law	3
Contracts I	3
Professionalism	
Period 2 – 12 weeks	
Contracts II	2
Torts	4
Legal Reasoning	2
Evidence Law and Practice I	3
Period 3 – 12 weeks	
LAWS II	2
Civil Litigation	3
Evidence Law and Practice II	3
Property	4
Court Watching	
Period 4 – 10 weeks	
Copyright	3
Legal Profession	2
Jurisdiction	3
Criminal Procedure	3
Lecture Series on the Profession	
SCALE Summer Session – 10 weeks	
Independent Study on the Profession	2
Options:	2+
Summer Elective Course(s)	
Summer Externship	
Summer Abroad Program	

SCALE II	
Period 5 – 10 weeks	
COURSE	UNITS
Legal History	2
Business Associations	4
Tort Litigation Practice	3
Community Property	2
Period 6 – 10 weeks	
Constitutional Law I	3
Remedies	3
Business or Property Transactions Practice	3
SCALE Only Elective	2
<i>i.e., Advanced Writing Course, Employment Law, Federal Income Taxation, Mergers/Acquisitions, Legislation</i>	
Period 7 – 10 weeks	
Constitutional Law II	3
Wills and Trusts	4
Criminal Law Practice	3
SCALE Intercession Course	1
Trial Advocacy	2
Period 8 – 10 weeks	
Mandatory 8-Week Externship	5

SCALE 2.5 YEAR PROGRAM

The SCALE Program provides a required modified curriculum to those students whose GPA (grade point average) is 2.7 or below at the end of the first year of SCALE. Under the modified curriculum, students will have fewer units during each period in their second year of SCALE and will have additional academic support courses to strengthen their skill set. Students will complete the program following an additional semester of Fall classes and will be eligible to graduate in December resulting in a 2.5 year program. No additional tuition will be charged for the modified curriculum. Any SCALE student at the end of the first year of SCALE may request to participate in the 2.5 year program.

FOCUS AREAS AND HONORS PROGRAMS

While SCALE students typically graduate as well-trained generalists, the program allows for a specific “mini” focus area through selections made during the Summer Session, the choice of traditional “add-on” electives during SCALE II, and the Period 8 externship.

Students have typically created focus areas in entertainment, international law, criminal or public interest law, among others.

SCALE students are also eligible to be considered for positions in Southwestern’s honors programs (Moot Court, Negotiation and Trial Advocacy Honors Programs; Law Review or Law Journal). Approximately 25% to 40% of SCALE students participate in honors programs.

For students interested in business and management, an accelerated **3-year concurrent J.D./M.B.A. degree program** for SCALE students is offered in partnership with The Peter F. Drucker and Masatoshi Ito Graduate School of Management, part of Claremont Graduate University. For more information, visit www.swlaw.edu/drucker.



SCALE COMMUNITY SCALE STUDENTS

Because of the unique curriculum and accelerated pace of the program, every SCALE applicant must engage in a personal interview to determine if the SCALE Program is the right fit. In recent years, the incoming classes have varied in size from about 40 to 60 students; the average age is 28, with a range from 20 to over 50; and the class is made up of a relatively equal percentage of men and women. Approximately 20 percent of the incoming students enter SCALE directly from college, and

it is not uncommon for entering SCALE students to have graduate degrees in a variety of disciplines. A typical class includes graduates of more than 30 undergraduate institutions around the country and is diversified in areas of interest, foreign languages spoken and work backgrounds. Recent graduates have included a research scientist from the Mayo Clinic, a patent agent and former director of intellectual property, a former U.N. Human Rights activist, an assistant to a U.S. congresswoman and a Tony Award-winning performer.

Despite the diversity in the typical SCALE class, there is tremendous cohesiveness among the students – they often form study groups and work closely with each other on small group projects. Students and alumni often describe the significant and lifelong friendships made during the SCALE Program. Camaraderie among students and faculty is also promoted by the numerous events and programs offered to the students during their course of study including Admission events, Orientation, student/alumni networking receptions and presentations, the SCALE Lecture Series and the SCALE end-of-year Champagne Toast.

SCALE is ideal for intellectually mature individuals who are "self-starters," who thrive under intensive study, and who enjoy working in small groups.

SCALE ALUMNI

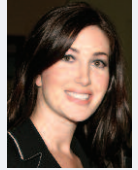
Currently, there are over 1,000 SCALE graduates who practice in more than 40 states and internationally, with approximately 700 in California. SCALE alumni represent a wide array of positions in law and business, including about 20 judicial officers; partners and associates in major law firms around the country; executives at 20th Century Fox, Yahoo and Walt Disney; federal, state and local prosecutors; a CEO and general counsel for major investment and multimedia companies; a former Treasurer of the State of California; and a former mayor and city councilpersons of municipalities in Southern California.

VOICES OF SCALE ALUMNI



Barry Groveman '77 is a partner in the law firm of Musick, Peeler & Garrett. He has found his SCALE education beneficial in private practice, and as he blazed trails in environmental protection legislation and enforcement as a Los Angeles city and county prosecutor. He claims that SCALE “made me a creative lawyer. Because of the way I was taught, I am able to find things that others may not readily see. My SCALE education ingrained that in me every hour of every day.”

“The small class sizes and personalized learning in SCALE enabled me to obtain caseload experience from participating in mock trials to preparing briefs and memos to developing compelling evidentiary support,” says former “Apprentice” **Stefanie Schaeffer '99**, Vice President of Sales and Marketing for Trump International Hotel and Tower, Las Vegas. “That training has really helped me in the courtroom and in the boardroom.”



A prime example of a “self-starter,” **Jonathan Rosenthal '80** used what he learned in SCALE when he founded NetAir International, a publicly held aviation and aerospace firm, at the age of 27. Having sold his stock for more than 100 times his investment, Rosenthal next turned to investing in and advising distressed companies. For more than 20 years, he has served as the managing partner of Saybrook Capital, a \$1.8 billion investment manager that has had leading roles in dozens of high profile restructurings, including some of the largest bankruptcy workouts in history such as Pacific Gas & Electric, United Airlines and K-mart. As a law student, Rosenthal “really thought the structure of the SCALE program was great, and the professors were enormously passionate. Without SCALE, I would not be able to do what I am doing today.”

For **Barbara Mulvaney '80**, it was the rigorous pace of Southwestern’s SCALE program that attracted her to the law school in the first place. She praised “the mix of conceptual learning and skills-oriented instruction” she received in SCALE. She singled out Evidence as particularly crucial to her career – a career that recently took the New Mexico attorney to The United Nations International Criminal Tribunal when she was assigned to prosecute Colonel Theoneste Bagosora, the accused mastermind of the Rwandan genocide, and became a key player in what is considered the most ambitious war crimes tribunal ever convened.



Admissions Office - J.D. Program ■ (213) 738-6834 ■ admissions@swlaw.edu

SCALE Office ■ (213) 738-6690 ■ scale@swlaw.edu

Southwestern Law School ■ 3050 Wilshire Boulevard ■ Los Angeles, CA 90010 ■ www.swlaw.edu

Southwestern Law School is approved by the American Bar Association and is a member of the Association of American Law Schools (Council of the Section of Legal Education and Admissions to the Bar of the American Bar Association, 321 North Clark Street, Chicago, IL 60610; (312) 988-6738). Since 1911, Southwestern has served the public as a nonprofit, nonsectarian educational institution. Southwestern does not discriminate on the basis of race, sex, age, religion, national or ethnic origin, sexual orientation, disability, marital status, or prior military service in connection with admission to the school, or in the administration of any of its educational, employment, financial aid, scholarship, or student activity programs. Nondiscrimination has been the policy of Southwestern since its founding.